

Knitted Cigarettes & Packet

by Clare Scope-Farrell

Looking for a project to keep you busy whilst you try to give up smoking? Complete with their very own packet, these woolly cigarettes are a charmingly nonsensical way to use up spare oddments of yarn.

You will need

For the Cigarettes and Packet

2.25mm knitting needles
Blunt-ended sewing needle suitable for yarn
Scissors

For (ten) Cigarettes only

Approx. 15g white 100% acrylic DK yarn
Approx. 5g dark brown 100% acrylic DK yarn
Approx. 5g pale orange 100% acrylic DK yarn

For the Cigarette packet only

Approx. 15g pale pink 100% acrylic DK yarn
Approx. 15g white 100% acrylic DK yarn
Oddments black 100% acrylic 4-ply yarn for embroidering logo (Optional)
26.5cm x 10.75cm piece cardboard (0.5mm thickness)

Tension

31 st x 43 rows worked on 2.25mm needles in acrylic DK yarn and stocking stitch = 10cm squared

Abbreviations

K – knit, p – purl, kfb – knit into the front and back of the next stitch (increases the stitch count by one), pfb – purl into the front and back of the next stitch (increases the stitch count by one), beg – beginning, DK – double knit, mm – millimetre(s), cm – centimetre(s), st(s) – stitch(es)

CIGARETTES (MAKE TEN)

Cast on 8 stitches using white DK yarn and 2.25mm knitting needles, attach dark brown DK yarn and **cast on** a further 18 stitches in dark brown (26 sts). When changing colour in this pattern, don't forget to gently wrap the two strands of yarn around one another on the wrong side of your work before working the first stitch in the new colour.

Row 1 (Wrong side) K18, switch to white, k to end

Row 2 (Right side) K8, switch to dark brown, k to end

Row 3 Work as for row 1 (fasten off the dark brown yarn when you switch to white in this row)

Row 4 Attach pale orange DK yarn, k8 in pale orange (gently wrap the white yarn around the pale orange yarn on the wrong side of your work before working each of these 8 stitches). Switch to white yarn, k to end

Row 5 P18, switch to pale orange, p to end

Row 6 K8, switch to white, k to end

Row 7 P18, switch to pale orange, p to end

Rows 8 – 13 Repeat rows 6 + 7 a further 3 times

Cast off 8 stitches using pale orange, switch to white (fasten off pale orange) and **Cast off** remaining stitches.

CIGARETTE PACKET – MAKE TWO, ONE IN PALE PINK YARN (EXTERIOR) AND ONE IN WHITE YARN (INTERIOR)

Cast on 20 stitches using the appropriate colour of DK yarn and 2.25mm knitting needles

Row 1 Knit **Row 2** Pfb, p to last st, pfb (22 sts)

Row 3 Kfb, k to last st, kfb (24 sts)

Row 4 Pfb, p to last st, pfb (26 sts)

Rows 5 – 8 Repeat rows 3 – 4 a further 2 times (34 sts on needle by the end of row 8)

Row 9 Knit **Row 10** Purl

Row 11 Cast off 8 sts @ beg of row, k to end (26 sts)

Row 12 Cast off 8 sts @ beg of row, p to end (18 sts)

Row 13 Knit **Row 14** Purl

Rows 15 – 76 Repeat rows 13 – 14 a further 31 times

Row 77 Cast on 8 sts @ beg of row, k to end (26 sts)

Row 78 Cast on 8 sts @ beg of row, p to end (34 sts)

Row 79 Knit **Row 80** Purl

Rows 81 – 108 Repeat rows 79 – 80 a further 14 times

Row 109 K7, turn **Row 110** Slip 1, p to end

Row 111 K5, turn **Row 112** Slip 1, p to end

Row 113 K3, turn **Row 114** Slip 1, p to end

Row 115 K to last 8 sts, slip 1, k to end

Row 116 P6, turn **Row 117** Slip 1, k to end

Row 118 P4, turn **Row 119** Slip 1, k to end

Row 120 P2, turn **Row 121** Slip 1, k to end

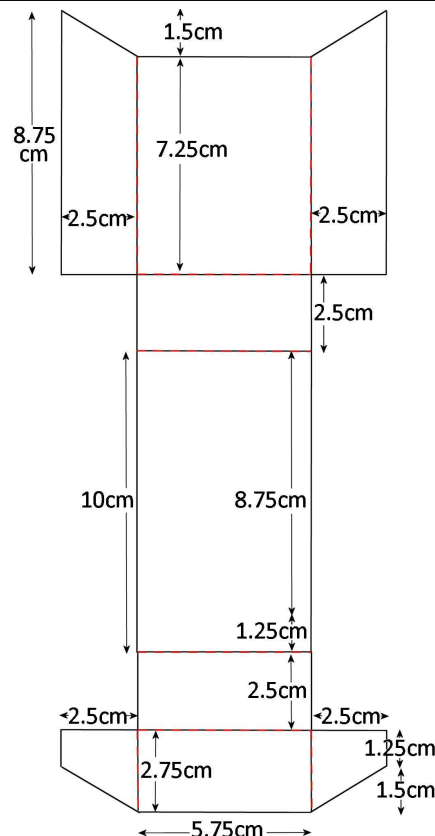
Cast off as purl

MAKING UP

Cigarette – Place the work on a flat surface with the wrong (predominantly p) side facing up. The dark brown/white section represents the tobacco/filter filling of the cigarette, so roll this section of the work up lengthways and sew the original cast on stitches to the final row of the dark brown/white section. Now with the right (k) side facing outwards, and using the appropriate colours of yarn, sew the cast off (white/pale orange) edge to the first line of white/pale orange stitches to complete the cigarette.

Packet – Using the diagram on the right of this page, prepare and cut out the cardboard lining. Using the dotted red lines as a guide, fold the packet together to loosen up the creases and ensure that the box fits together correctly. Once you're satisfied with the cardboard lining, fold it back out flat again.

With the right (k) sides facing outwards, fold the knitted exterior/interiors around the cardboard lining and stitch all of the edges together where they meet. Now fold up the packet and stitch the edges together as appropriate. If you want to, you can customise the cigarette packet with embroidery like the example in the accompanying picture. In this case, the logo was added using black 4-ply yarn and embroidery chain stitch – simple, but effective. Once you've finished making the cigarette packet, insert the cigarettes to complete your project.



Safety Notice

The Knitted Cigarettes and Packet are designed to be used as novelty art. They are not designed for children and must not be used as playthings. Regardless of the age of the intended recipient of the completed items, please take care to ensure that content cannot be extracted from your work when complete and that all loose ends of yarn are fastened off securely and sewn in out of sight.

Under no circumstances should any of these knitted items be exposed to any source of heat, ignition, flame etc. Acrylic yarn melts when heated and poses a serious burn risk if used irresponsibly (i.e. being exposed to such sources of heat, ignition and flame).

Copyright & Disclaimer

These patterns and pictures are the copyright of Clare Scope-Farrell and are available for the exclusive usage of users within the UK only. Aside from the printing of these patterns direct from our website whilst they remain available, no part of this publication may be reproduced or distributed without the written permission of Clare Scope-Farrell. Every endeavour has been taken to ensure that these patterns were accurate at the time of going to press, however Clare Scope-Farrell will not accept responsibility for any loss or liability arising from errors contained within and/or the use or misuse of these patterns.